

3 TIPS FOR IMPROVING RURAL BROADBAND SPEED



Know your broadband speed

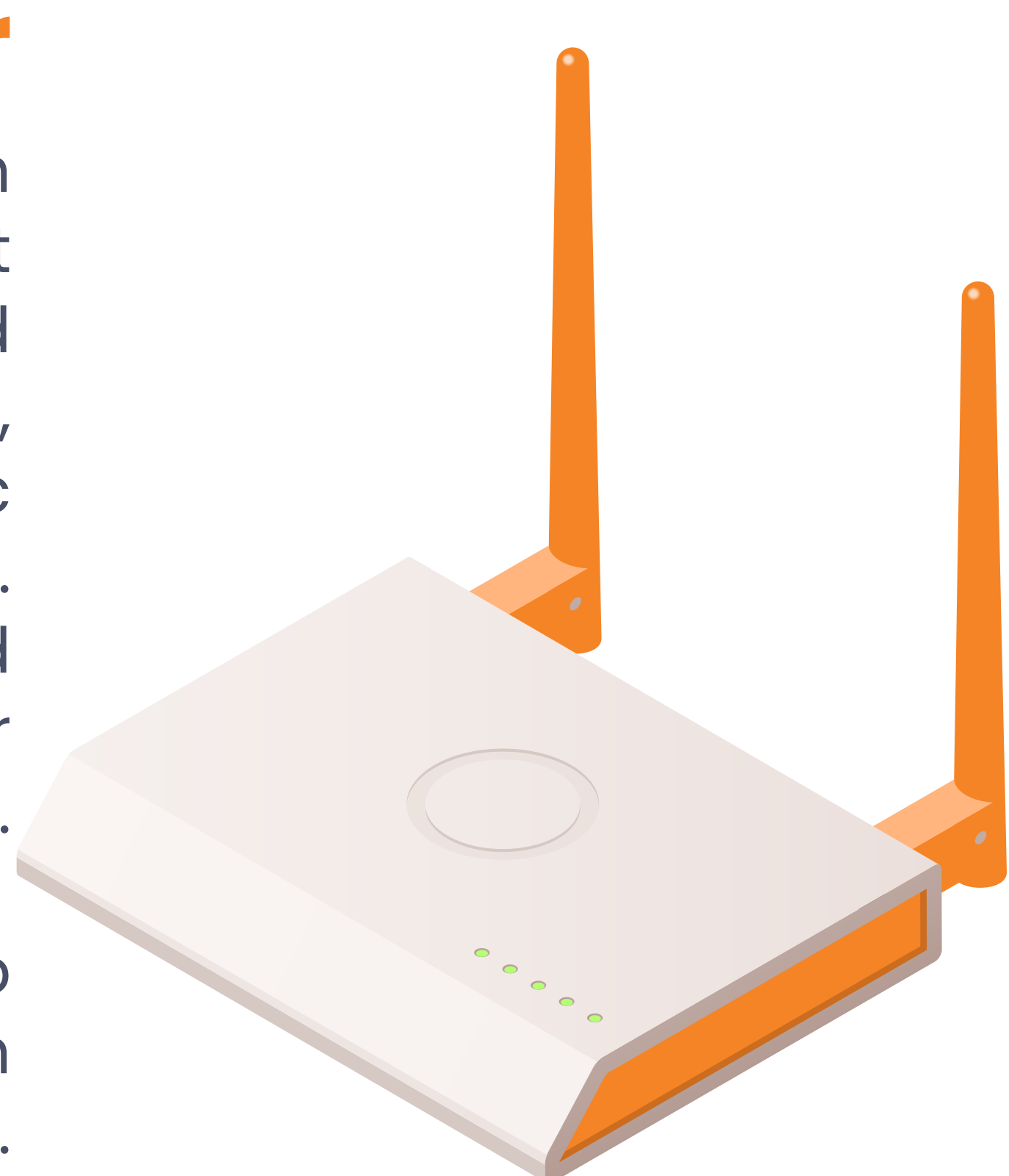
Before trying to improve your broadband speed, it's essential to know the speed of your current connection. You can use an online test to measure your download and upload speeds.

By understanding your baseline, you'll be better equipped to assess the effectiveness of any changes you make to improve your connection.

Reposition the router

The location of your Wi-Fi router can significantly impact your internet speed. Routers should be placed in a central location in your home, away from appliances or electronic devices that may cause interference. Ideally, the router should be elevated and not obstructed by furniture or other objects.

Repositioning your router can help improve your Wi-Fi signal strength and, in turn, your internet speed.



Switch broadband providers

If you've tried optimising your current setup and are still experiencing slow speeds, it may be time to consider switching broadband providers.

Look for a provider that specialises in rural broadband services and has a proven track record in delivering fast and reliable connections in remote areas.

Why is rural broadband often slower?

The primary reason rural broadband tends to be slower is the lack of infrastructure in remote areas. As cities and towns have higher population densities, telecommunication companies prioritise investment in these regions. This leaves rural areas with limited infrastructure, resulting in weaker signals and slower internet speeds.

Moreover, long distances between homes and Internet Service Providers (ISPs) can also contribute to reduced signal strength and slower connections. This issue is exacerbated when there are obstacles such as hills, trees and buildings that further weaken signals.



Wireless Connect is your supplier of reliable rural broadband in Ireland

At Wireless Connect, we understand the frustration of dealing with unreliable broadband daily. We saw the challenges that homes and businesses – particularly in rural communities – were facing, so we developed a purpose-built infrastructure to bring high-speed broadband to rural Ireland, specifically in Kildare, Laois, Offaly and Tipperary.

By focusing on providing better signals and coverage in these regions, we have created a reliable network that can deliver super-fast Wi-Fi speeds to every room in your home.

If you're experiencing slow rural broadband and are looking for a reliable solution, consider Wireless Connect. We are committed to providing high-speed broadband to residential customers in rural Ireland, helping you stay connected in today's digital age.

Contact us today at sales@wirelessconnect.ie or call **0505 36007** to find out more.